

**RAB27A Antibody**  
**Rabbit mAb**  
**Catalog # AP92133****Specification**

---

**RAB27A Antibody - Product Information**

Application	WB, FC, ICC, IP
Primary Accession	<a href="#">P51159</a>
Clonality	Monoclonal
<b>Other Names</b>	
GS2; RAM; RAB27; HsT18676;	
Isotype	Rabbit IgG
Host	Rabbit
Calculated MW	24868 Da

**RAB27A Antibody - Additional Information**

Dilution	WB~~1:1000 FC~~1:10~50 ICC~~N/A IP~~N/A
Purification	Affinity-chromatography
Immunogen	A synthesized peptide derived from human RAB27A
Description	Plays a role in cytotoxic granule exocytosis in lymphocytes. Required for both granule maturation and granule docking and priming at the immunologic synapse.
Storage Condition and Buffer	Rabbit IgG in phosphate buffered saline , pH 7.4, 150mM NaCl, 0.02% sodium azide and 50% glycerol. Store at +4°C short term. Store at -20°C long term. Avoid freeze / thaw cycle.

**RAB27A Antibody - Protein Information****Name** RAB27A**Synonyms** RAB27**Function**

Small GTPase which cycles between active GTP-bound and inactive GDP-bound states. In its active state, binds to a variety of effector proteins to regulate homeostasis of late endocytic pathway, including endosomal positioning, maturation and secretion (PubMed:<a href="http://www.uniprot.org/citations/30771381" target="\_blank">30771381</a>). Plays a role in cytotoxic granule exocytosis in lymphocytes. Required for both granule maturation and granule docking and priming at the immunologic synapse.

**Cellular Location**

Membrane; Lipid-anchor. Melanosome. Late endosome. Lysosome. Note=Identified by mass spectrometry in melanosome fractions from stage I to stage IV (PubMed:12643545, PubMed:17081065). Localizes to endosomal exocytic vesicles (PubMed:17237785).

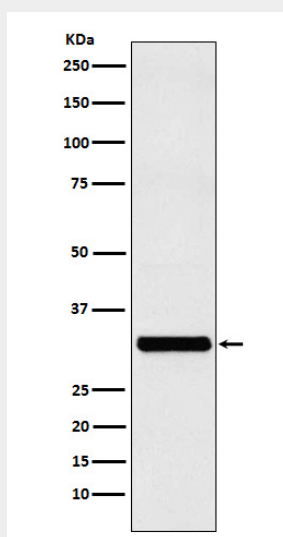
**Tissue Location**

Found in all the examined tissues except in brain. Low expression was found in thymus, kidney, muscle and placenta Detected in melanocytes, and in most tumor cell lines examined Expressed in cytotoxic T-lymphocytes (CTL) and mast cells

**RAB27A Antibody - Protocols**

Provided below are standard protocols that you may find useful for product applications.

- [Western Blot](#)
- [Blocking Peptides](#)
- [Dot Blot](#)
- [Immunohistochemistry](#)
- [Immunofluorescence](#)
- [Immunoprecipitation](#)
- [Flow Cytometry](#)
- [Cell Culture](#)

**RAB27A Antibody - Images**

Western blot analysis of RAB27A expression in MCF-7 cell lysate.